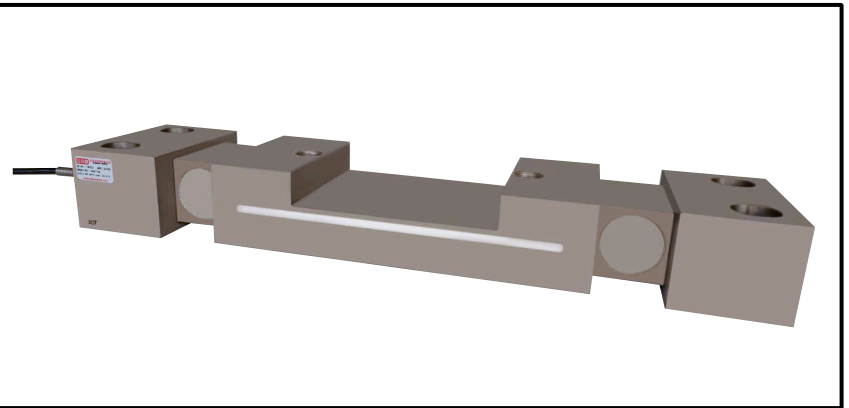


ADS-741

DOUBLE ENDED SHEAR BEAM LOAD CELL



DESCRIPTION :

ASB-721 is a double ended shear beam load cell suitable for Track Weighing.

APPLICATIONS :

- Truck Scale
- Track Scale
- Rail Weigher
- On Board Weighing

KEY FEATURES :

- Capacity range from 10 tonf to 30 tonf
- Alloy Tool Steel construction
- IP 67 Environment Protection

SPECIFICATIONS :

Rated capacity (Tonf.)	:	10, 15, 20, 25, 30
Excitation Voltage	:	10VDC-Maximum 15 VDC
Rated Output	:	1.0 mV/V
Non – Linearity	:	< ± 0.1 % FSO (Full scale Output)
Hysteresis	:	< ± 0.15 % FSO
Non-Repeatability	:	< ± 0.1 % FSO
Creep error (30 minutes)	:	< ± 0.02 % FSO
Zero Load Output	:	± 1.0 % FSO
Input Resistance	:	770 ± 20 Ohms
Output Resistance	:	700 ± 7 Ohms
Insulation Resistance	:	> 1000 Mega Ohms
Side Load Allowed	:	50 % of Rated Capacity
Safe Overload	:	150 % of Rated Capacity
Ultimate Overload	:	250 % of Rated Capacity
Temperature Compensated Range	:	0 to 60° C
Temperature Effect on Output	:	< 0.005 % FSO/° C
Temperature Effect on Zero	:	< 0.005 % FSO/° C
Deflection	:	< 0.5 mm at FSO
Tightening Torque	:	10 Kg-m.
Finish & Construction	:	Electroless Nickel Plated Tool Steel.
Environment Protection	:	IP 67



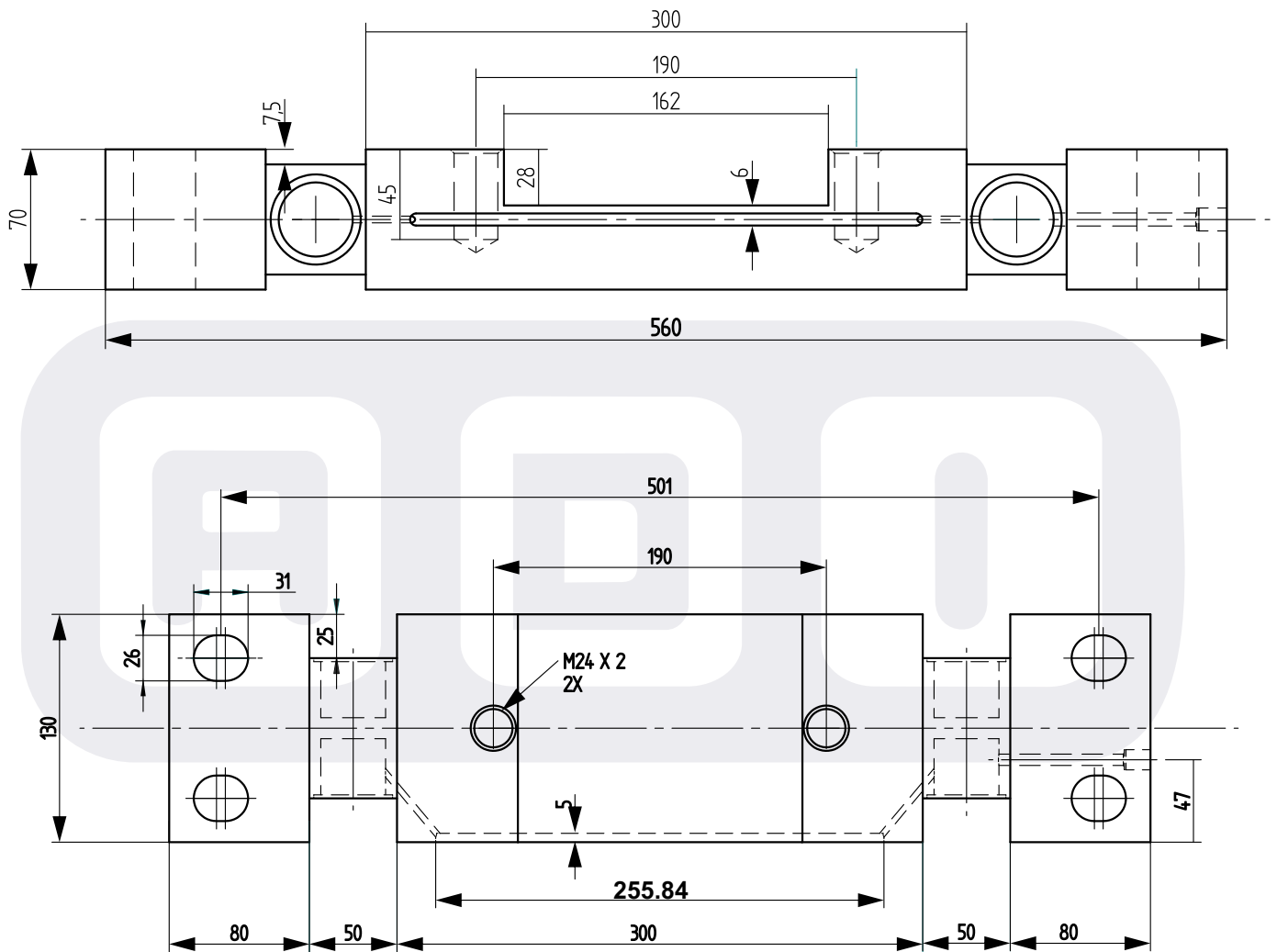
ADI CONTROLS

1B,1C POR INDUSTRIAL PARK
BEHIND SAHYOG HOTEL
POR 391243 DIST VADODARA (INDIA)

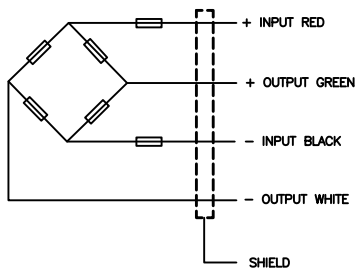
www.adicontrols.com

Email : sales@adicontrols.com

Customer Care : +91 9328579990



Electrical Termination



ADI CONTROLS

1B,1C POR INDUSTRIAL PARK
 BEHIND SAHYOG HOTEL
 POR 391243 DIST VADODARA (INDIA)

www.adicontrols.com

Email : sales@adicontrols.com

Customer Care : +91 9328579990