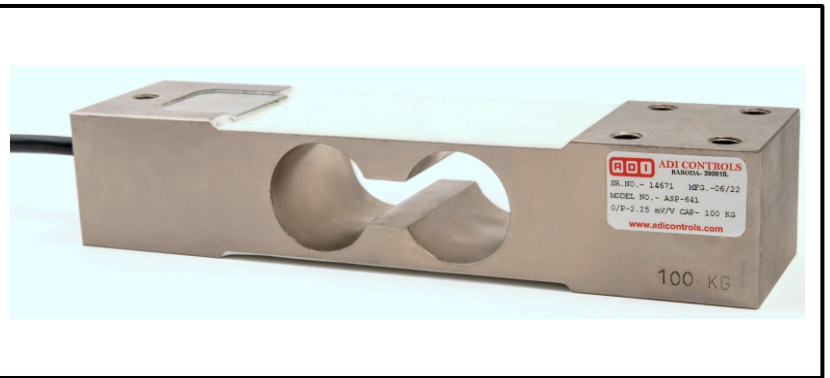


# ASP-641

## PLATFORM LOAD CELL



### DESCRIPTION :

ASP-641 is a high accuracy, low profile platform load cell – ideal solution for medium size platform scales.

### APPLICATIONS :

- Platform Scales medium size
- Bag Weighing
- Hopper Weighing

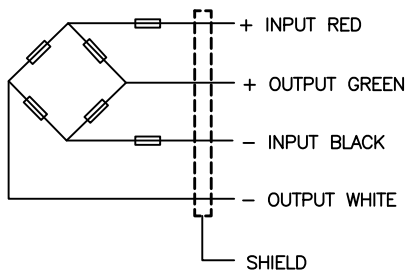
### KEY FEATURES :

- Low Profile design
- Tool Steel construction
- Wide capacity range
- Supports 750x750 platform size

### SPECIFICATIONS :

Rated capacity (Kgf.)	: 100, 200, 300, 500, 750, 1000, 1500
Excitation Voltage	: 10VDC-Maximum 15 VDC
Rated Output	: 2.0 mV/V
Non – Linearity	: $< \pm 0.025$ % FSO (Full scale Output)
Hysteresis	: $< \pm 0.01$ % FSO
Non-Repeatability	: $< \pm 0.02$ % FSO
Creep error (30 minutes)	: $< \pm 0.03$ % FSO
Zero Load Output	: $\pm 1.0$ % FSO
Input Resistance	: $388 \pm 10$ Ohms
Output Resistance	: $350 \pm 4$ Ohms
Insulation Resistance	: $>1000$ Mega Ohms
Safe Overload	: 150 % of Rated Capacity
Ultimate Overload	: 250 % of Rated Capacity
Temperature	: 0 to 60° C
Compensated Range	
Temperature Effect at Full Load	: $<0.0015$ % FSO/° C
Temperature Effect at Zero Load	: $< 0.002$ % FSO/° C
Max. Platform Size	: 750 x 750 mm
Off Center Load Error	: $< 0.02\%$ of FSO at 1/3 rated load/375mm off center
Deflection	: $<0.5$ mm at FSO
Finish & Construction	: Electroless Nickel plated Tool Steel. Stainless Steel available optionally
Environment Protection	: IP 65 compatible

### Electrical Termination



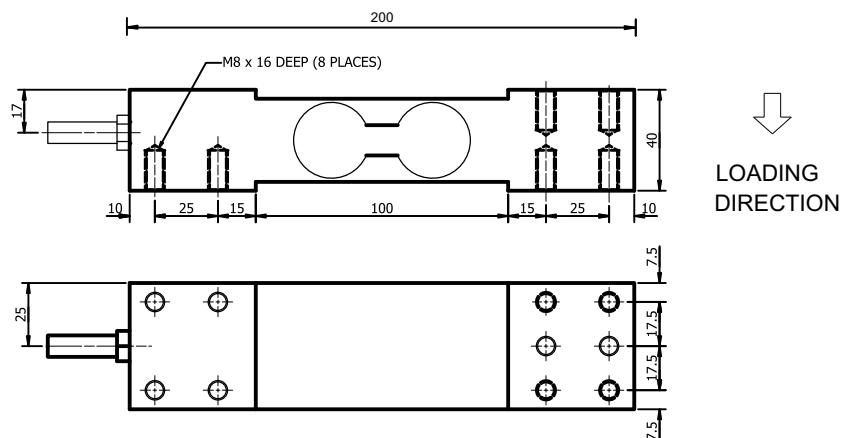
## ADI CONTROLS

1B,1C POR INDUSTRIAL PARK  
BEHIND SAHYOG HOTEL  
POR 391243 DIST VADODARA (INDIA)

[www.adicontrols.com](http://www.adicontrols.com)

Email : [sales@adicontrols.com](mailto:sales@adicontrols.com)

Customer Care : +91 9328579990



All dimensions are in mm.